

# JŪRMALA'S ČIEKURI

RĪGAS LĪCIS  
JŪRMALA, LATVIA

TEAM: NE\_01  
DATE: OCTOBER 17<sup>TH</sup> 2022  
COMPETITION SUBMISSION



1.VISION  
2.MASTER PLAN AND LANDSCAPE  
3.HOTEL  
4.RESIDENCES EXR AND HAA

# 1. VISION

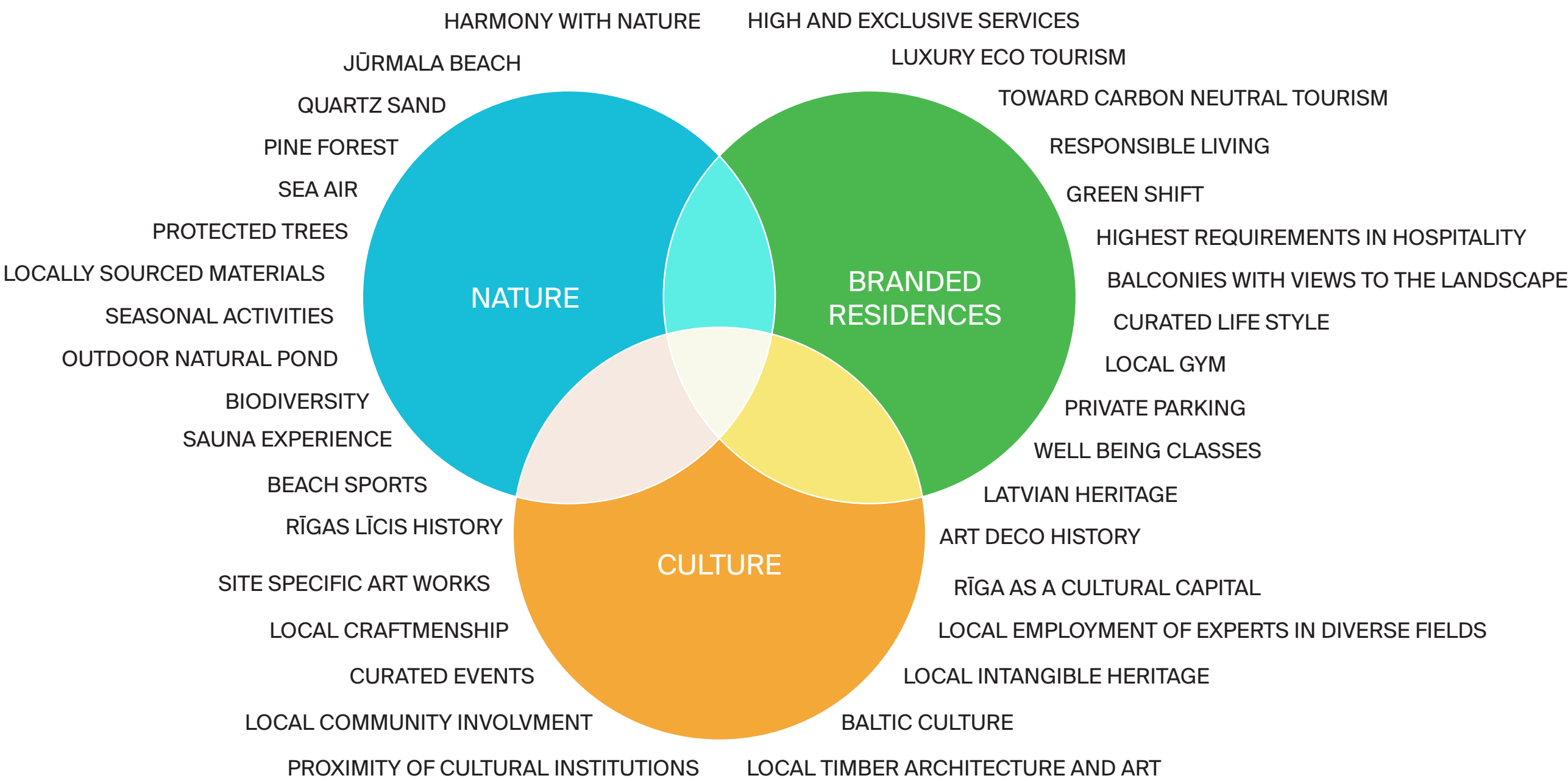


‘JŪRMALA’S ČIEKURI’ IS A  
CELEBRATION OF THE NATURAL  
LANDSCAPES THAT HAVE SHAPED  
OUR SITE AND IT’S HISTORY.  
OUR PROJECT WILL THEREFORE  
ENHANCE THE EXISTING  
QUALITIES OF THE SITE TO  
CREATE A UNIQUE DESTINATION  
WITH THE HIGHEST STANDARDS  
OF TOMORROW’S LUXURY  
HOSPITALITY.

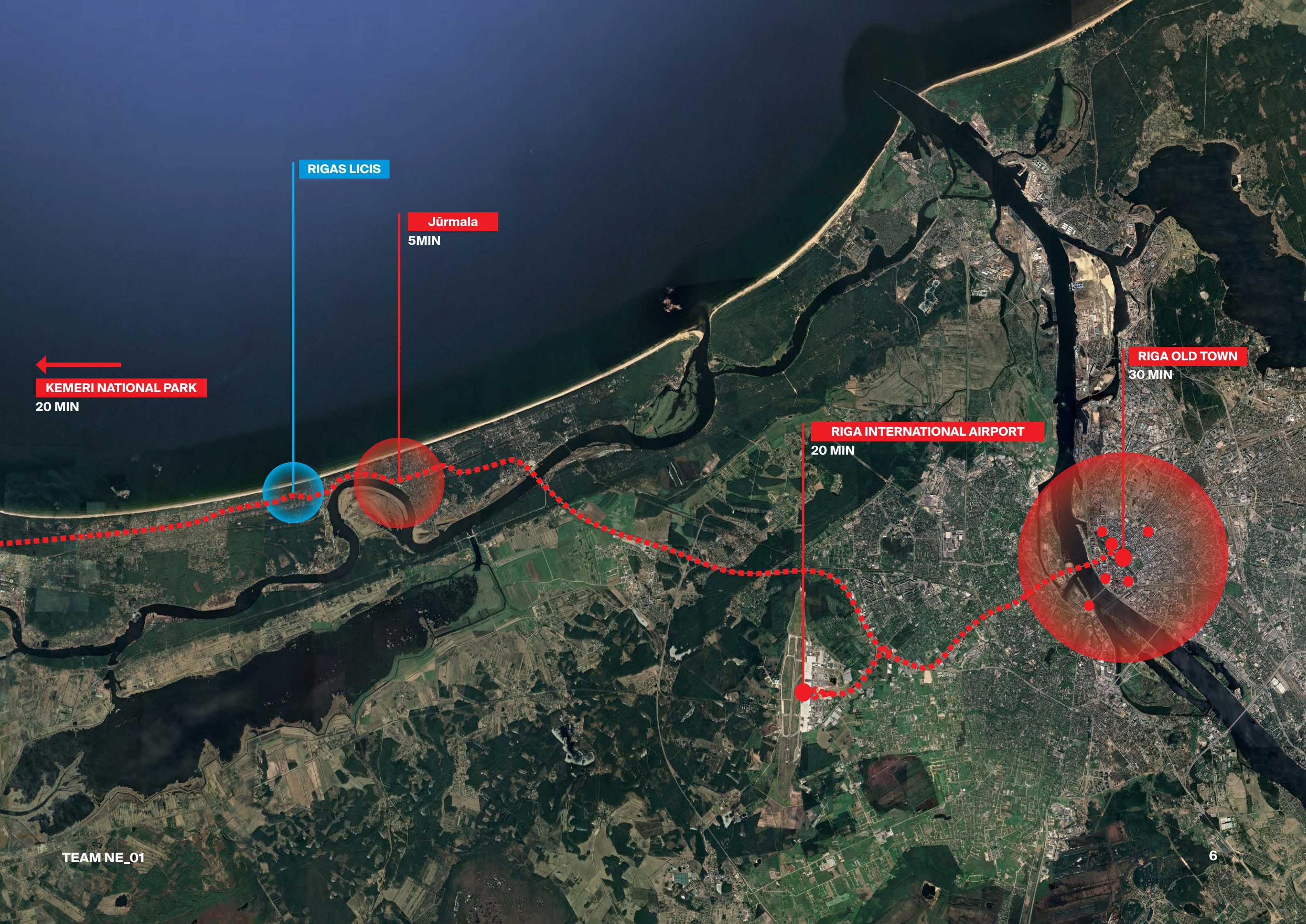


# SUSTAINABLE LUXURY LIVING

OUR VISION FOR THE FUTURE OF A CONTEMPORARY VIBRANT COMPLEX IS DEFINED BY 3 COMPONENTS







RIGAS LICIS

Jūrmala  
5MIN

←  
KEMERI NATIONAL PARK  
20 MIN

RIGA INTERNATIONAL AIRPORT  
20 MIN

RIGA OLD TOWN  
30 MIN





KEMERI NATIONAL PARK  
20 MIN

10 MIN WALKING DISTANCE

RIGAS LICIS

JAUNDUBULTU PARK

Jūrmala MUSIC SCHOOL

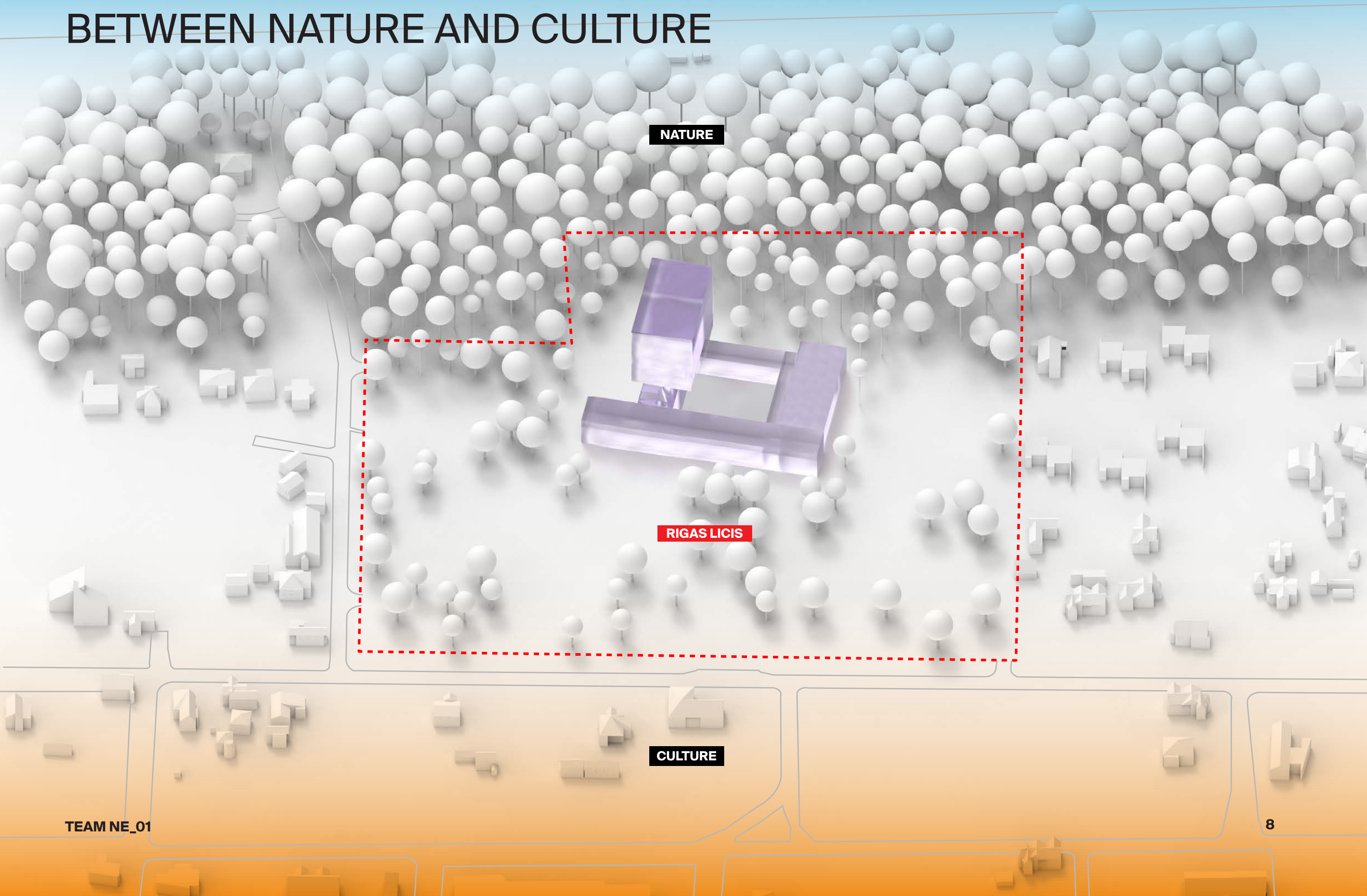
JAUNDUBULTI STATION

DUBULTI STATION

Jūrmala  
5 MIN  
RIGA AIRPORT  
20 MIN  
RIGA OLD TOWN  
30 MIN



# BETWEEN NATURE AND CULTURE





GULF OF RIGA

# SITE'S EXISTING ASSETS

BEACH

PINE FOREST

HERITAGE SITE

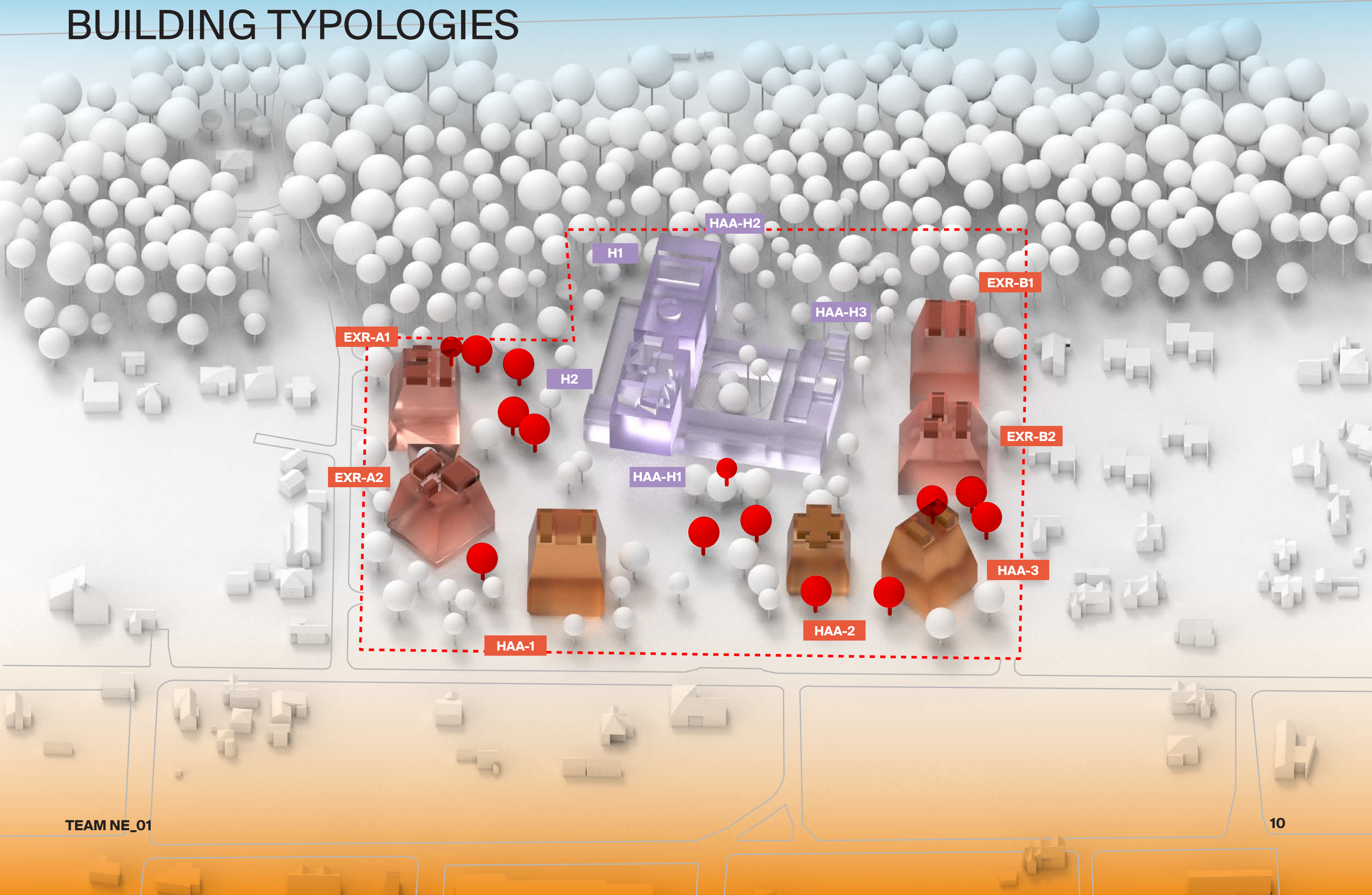
PROTECTED TREES

RIGA >

PARC



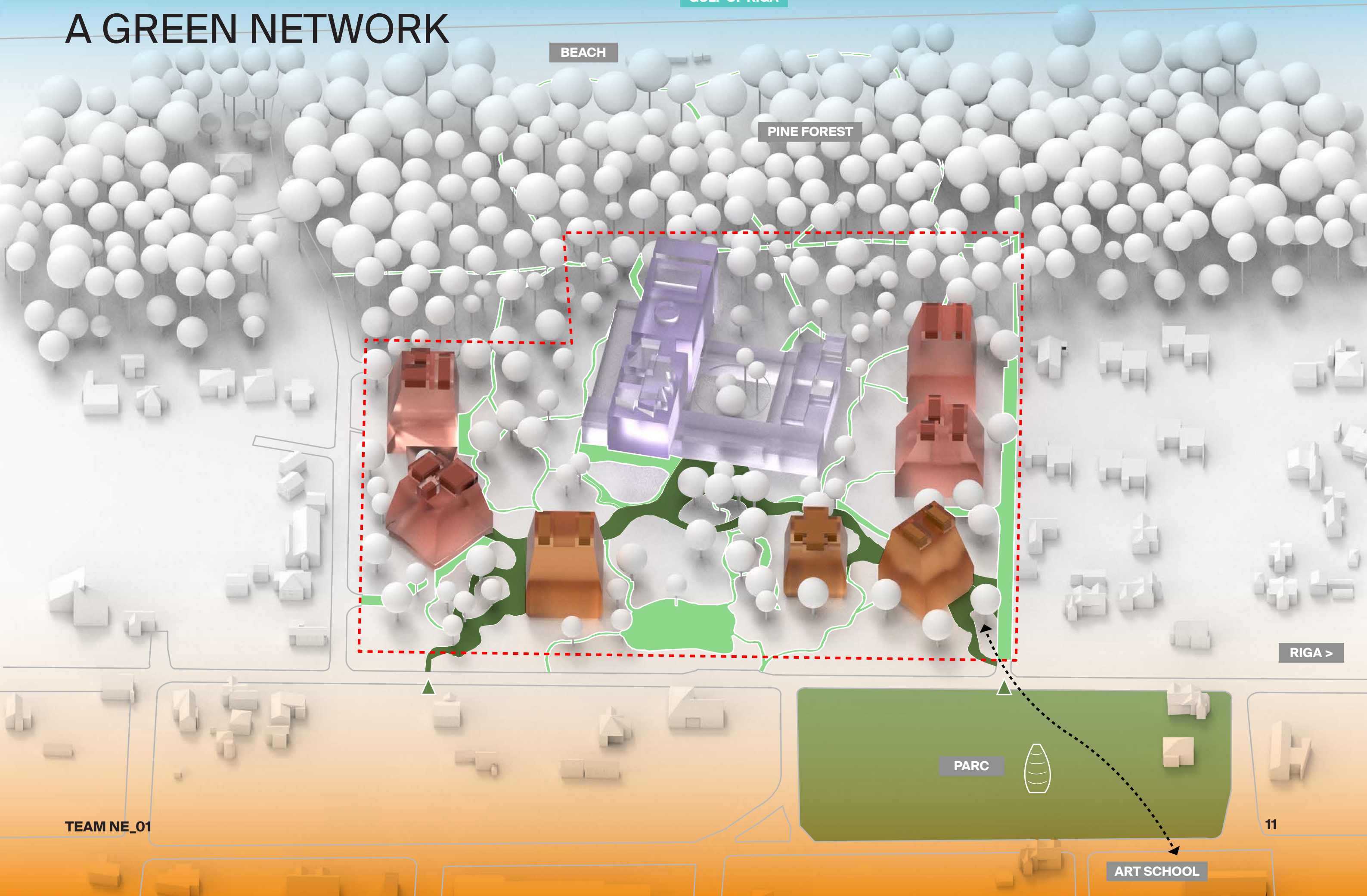
# BUILDING TYPOLOGIES





GULF OF RIGA

# A GREEN NETWORK



BEACH

PINE FOREST

RIGA >

PARC

TEAM NE\_01

11

ART SCHOOL



# SUSTAINABILITY

## CREATING A SYNERGY BETWEEN THE LANDSCAPE AND THE BUILT ENVIRONMENT



### MASTER PLAN AND LANDSCAPE

- green and white network enhancing biodiversity
  - blue structure for well-being and leisure
    - preserving all valuable trees
- increasing the area of greenery as much as possible
  - using local and natural materials
- selecting local and native plants for the landscaping
  - open air amenities
    - plants and activities following the seasons
- caring about local biodiversity with its fauna and flora
- choosing the best orientation for apartments in relation to the sun
  - breaking the wind (shapes of the inclined volumes)
- using robust and durable materials for the new constructions
  - minimizing heat island effect
  - minimizing paved mineral areas
- recycling of rain water for landscape watering and ponds
  - natural ponds

### HOTEL AND HOUSING

- new buildings orientated with the sun
- minimising the footprint of new constructions
- re-use and renovation of the existing buildings as much as possible
  - avoid demolitions when possible
- using local and natural materials for the new constructions
  - green roofs for the plinth
  - solar panels on housing and hotel roofs
  - bird nests on facades and roofs
- using shading elements for sun protection
  - natural ventilation of apartments
- hotel facade with a maximum 40% openings to control building mass
  - integrated smart technologies for energy saving
    - heat pumps and geothermal energy
    - efficient heating and cooling systems
- collection of rain water for toilets and terraces watering
- create a synergy between the new constructions and the surrounding landscapes
  - well insulated facades and ceilings
  - double or triple glazing for the facades
    - minimizing resources wastage
  - integrated compost for kitchen waste
    - enhancing micro-climats



